

\$1,149,900 - 2012 Waterbury Road, Chestermere

MLS® #A2186074

\$1,149,900

5 Bedroom, 4.00 Bathroom, 3,305 sqft

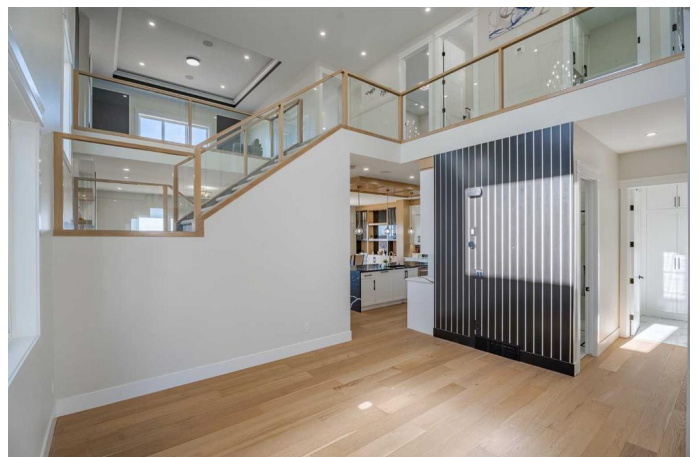
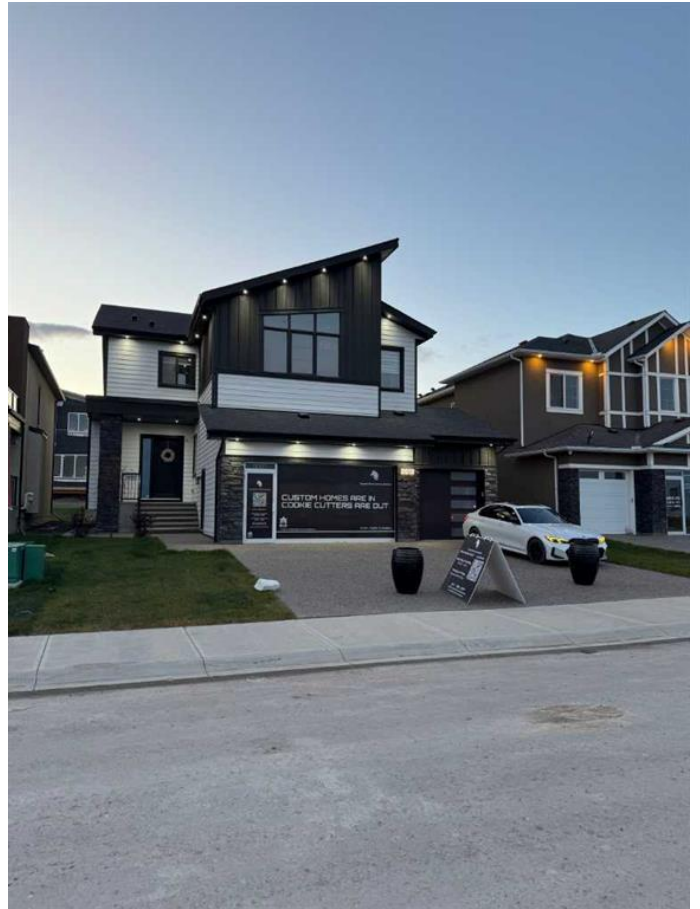
Residential on 0.13 Acres

NONE, Chestermere, Alberta

Leaseback Opportunity | Waterford Estates - New Community in Chestermere | 5 Beds + 4 Baths | Over 3300 SQFT ABOVE GRADE | Introducing a stunning brand new 2 storey single family home with a triple garage attached, offering luxurious high-end finishings throughout. With a total of 5 spacious bedrooms, including 2 primary bedrooms with their own ensuites, and 4 full bathrooms, this home is designed to accommodate large families and offer the utmost comfort.

The main floor boasts 10 feet ceilings and features a master kitchen equipped with chef-grade appliances, along with a walkthrough spice kitchen that provides easy and quick access to the mudroom leading to the garage. The main floor also includes a living room, family room, dining room, full 3 piece washroom, a huge open-to-above ceiling height, and a flex room that can be utilized as a 5th bedroom, office, or any other space to suit your needs.

The second floor features 4 bedrooms, each with their own walk-in closets, a bonus room, and an open-to-below area space that creates a grand and spacious feel. The laundry room, finished with cabinets and a sink, adds to the convenience of this home. The bonus room features a tray ceiling, while one of the primary bedrooms boasts a stunning 4-way vaulted ceiling.



Don't miss the chance to own this exquisite home in a sought-after neighborhood! In addition to the exceptional features of this stunning brand new 2 storey single family home, it is situated on a generous lot size of 52 feet wide by 110 feet long. The property is located in the prestigious Waterford Estates, Chestermere AB, providing you with a desirable and sought-after location.

This large lot offers ample outdoor space for you and your family to enjoy, whether it's for gardening, outdoor entertainment, or just relaxing in the sunshine. The neighborhood is known for its beautiful landscaping, friendly atmosphere, and excellent amenities, including schools, shopping, and recreational facilities.

Come and experience the luxury and comfort of this beautiful home situated on a prime lot in one of Chestermere's most desirable neighborhoods.

Built in 2024

Essential Information

MLS® #	A2186074
Price	\$1,149,900
Bedrooms	5
Bathrooms	4.00
Full Baths	4
Square Footage	3,305
Acres	0.13
Year Built	2024
Type	Residential
Sub-Type	Detached
Style	2 Storey
Status	Active

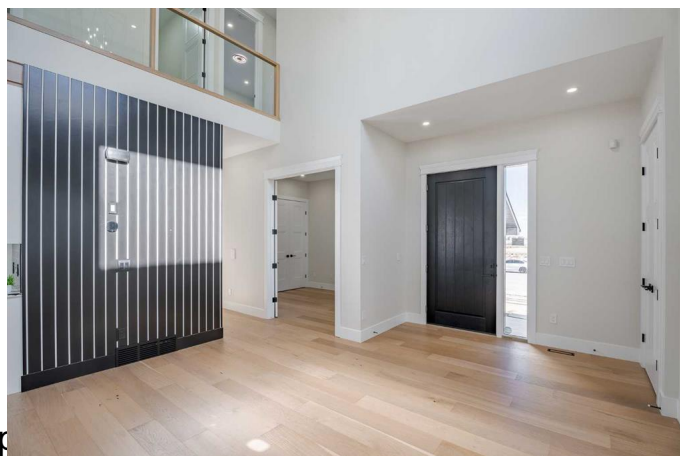
Community Information

Address	2012 Waterbury Road
---------	---------------------

Subdivision	NONE
City	Chestermere
County	Chestermere
Province	Alberta
Postal Code	T1X 2Y8

Amenities

Parking Spaces	6
Parking	Aggregate, Garage Door Opener, Attached
# of Garages	3



Interior

Interior Features	Kitchen Island, No Smoking Home, Walk-In Closet(s), Built-in Features, Ceiling Fan(s), Crown Molding, Double Vanity, High Ceilings, No Animal Home, Open Floorplan, Pantry, Separate Entrance, Tray Ceiling(s), Vaulted Ceiling(s), Wired for Data, Wired for Sound
Appliances	Dishwasher, Microwave, Built-In Refrigerator, Built-In Oven, Garage Control(s), Gas Cooktop, Range Hood
Heating	Forced Air, High Efficiency, Natural Gas
Cooling	None
Fireplace	Yes
# of Fireplaces	1
Fireplaces	Gas
Has Basement	Yes
Basement	Full, Exterior Entry, Unfinished

Exterior

Exterior Features	Lighting
Lot Description	Interior Lot, City Lot, Rectangular Lot
Roof	Asphalt Shingle
Construction	Manufactured Floor Joist, Stone, Wood Frame, Wood Siding
Foundation	Poured Concrete

Additional Information

Date Listed	January 7th, 2025
Days on Market	114
Zoning	R1

Listing Details

Data is supplied by Pillar 9â„¢ MLS® System. Pillar 9â„¢ is the owner of the copyright in its MLS® System. Data is deemed reliable but is not guaranteed accurate by Pillar 9â„¢. The trademarks MLS®, Multiple Listing Service® and the associated logos are owned by The Canadian Real Estate Association (CREA) and identify the quality of services provided by real estate professionals who are members of CREA. Used under license.