

# \$384,900 - 1808, 210 15 Avenue Se, Calgary

MLS® #A2207578

**\$384,900**

2 Bedroom, 2.00 Bathroom, 968 sqft

Residential on 0.00 Acres

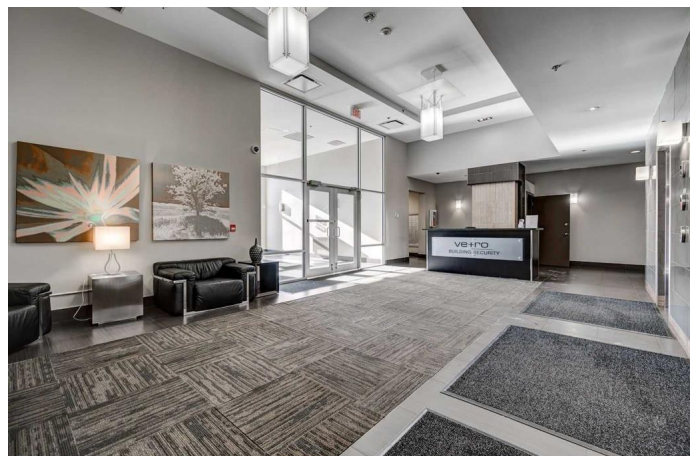
Beltline, Calgary, Alberta

This exceptional 960 sq ft, open-concept unit features 2 bedrooms, 2 bathrooms, a spacious living/dining area, in-suite laundry and a large balcony with incredible city and mountain views. The hardwood flooring throughout the home offers a clean and consistent feeling of warmth and brightness. The living/dining area is perfect for entertaining, and the abundance of natural light showcases the space. The two generous bedrooms have walk-through closets and 4-piece ensuites for your privacy and retreat. Additional features include ample in-unit storage, full-size laundry, a neat wall niche that you could use as a workspace and one titled parking stall. Residents enjoy concierge, security, exercise room, Jacuzzi, steam room, social/billiard room, theatre, rooftop patio, bike room and guest parking. Located next to the Stampede LRT and minutes from popular destinations, this home offers a vibrant lifestyle.

Built in 2009

## Essential Information

MLS® #	A2207578
Price	\$384,900
Bedrooms	2
Bathrooms	2.00
Full Baths	2
Square Footage	968
Acres	0.00



Year Built	2009
Type	Residential
Sub-Type	Apartment
Style	Single Level Unit
Status	Active

### Community Information

Address	1808, 210 15 Avenue Se
Subdivision	Beltline
City	Calgary
County	Calgary
Province	Alberta
Postal Code	T2G0B5

### Amenities

Amenities	Fitness Center, Recreation Facilities, Secured Parking, Storage, Visitor Parking, Garbage Chute, Sauna
Parking Spaces	1
Parking	Parkade

### Interior

Interior Features	Breakfast Bar, Closet Organizers
Appliances	Dishwasher, Dryer, Electric Stove, Microwave Hood Fan, Refrigerator, Washer
Heating	Baseboard
Cooling	Central Air
# of Stories	34

### Exterior

Exterior Features	Private Yard
Construction	Concrete

### Additional Information

Date Listed	April 1st, 2025
Days on Market	40
Zoning	DC

### Listing Details

Listing Office	CIR Realty
----------------	------------

Data is supplied by Pillar 9â„¢ MLSÂ® System. Pillar 9â„¢ is the owner of the copyright in its MLSÂ® System. Data is

deemed reliable but is not guaranteed accurate by Pillar 9â„¸. The trademarks MLSÂ®, Multiple Listing ServiceÂ® and the associated logos are owned by The Canadian Real Estate Association (CREA) and identify the quality of services provided by real estate professionals who are members of CREA. Used under license.