

# \$495,000 - 2901, 211 13 Avenue Se, Calgary

MLS® #A2210460

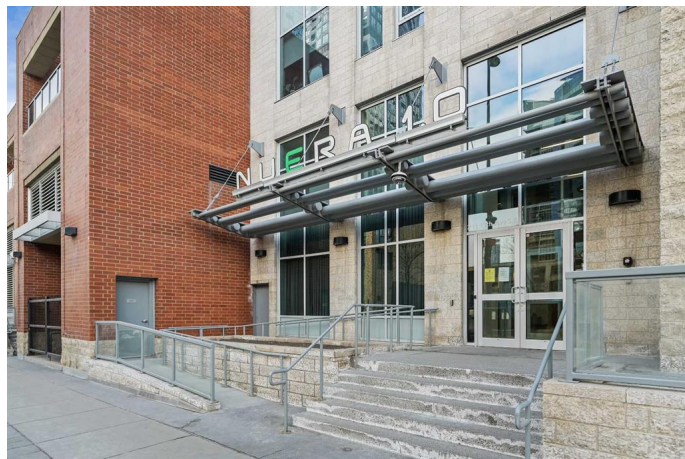
## \$495,000

2 Bedroom, 2.00 Bathroom, 983 sqft

Residential on 0.00 Acres

Beltline, Calgary, Alberta

Located way, way up on the 29th floor of NUERA, this sub-penthouse offers sweeping views to the south along with soaring 10ft ceilings to go with floor to ceiling windows. In addition to the magnificent perch, homes on these upper levels are very quiet with only 6 units per floor as well as providing the owner a prime titled parking on P1 with an extra wide stall. Inside the spacious unit you have a very functional and attractive kitchen with updated stainless appliances, loads of granite counter top and storage space in the maple cabinets. Porcelain tile floors adorn the floors and run through the entry, kitchen, bathroom and living areas. Each of the two generous bedrooms enjoy large windows and warmly carpeted floors. The primary suite has a substantial walk-in closet, and an ensuite complete with a separate 10mm glass tiled shower, swirl pool bath and granite counters. The secondary bath also sports a large 10mm glass and tile shower, vessel sink and granite counters. In suite stacked laundry is a must as are the contemporary blinds to darken the windows in the times that is required. Your modest \$670 per month condo fee includes the normal condo necessities plus an amazing owner's gym, outdoor courtyard, a huge bicycle storage area that is second to none (subject to small additional annual fee), daytime concierge service, an assigned storage unit, and a clean, attractive, secured and well-maintained building you can be proud of. The shops and restaurants of the east



2901, 211 13 AVENUE SE  
RECA MEASUREMENT STANDARD - CALGARY, AB  
MAIN LEVEL (AG) - 982.91 Sq.Ft. / 91.31 m²  
TOTAL ABOVE GRADE RMS SIZE - 982.91 Sq.Ft. / 91.31 m²



Beltline, BMO Centre, Saddledome and the rest of Stampede Park are all right there in convenient walking distance with the new 17th Ave entrance. The recently modified and much approved Stampede LRT Station could not be handier. All of this is really an outstanding package and can now be yours. Come and see for yourself today!

Built in 2010

### **Essential Information**

MLS® #	A2210460
Price	\$495,000
Bedrooms	2
Bathrooms	2.00
Full Baths	2
Square Footage	983
Acres	0.00
Year Built	2010
Type	Residential
Sub-Type	Apartment
Style	Single Level Unit
Status	Active

### **Community Information**

Address	2901, 211 13 Avenue Se
Subdivision	Beltline
City	Calgary
County	Calgary
Province	Alberta
Postal Code	T2G 1E1

### **Amenities**

Amenities	Bicycle Storage, Elevator(s), Fitness Center, Garbage Chute, Parking, Secured Parking, Snow Removal, Storage, Visitor Parking
Parking Spaces	1
Parking	Oversized, Titled, Underground

### **Interior**

Interior Features	Breakfast Bar, High Ceilings, Open Floorplan, Quartz Counters, Jetted Tub
Appliances	Dishwasher, Dryer, Electric Stove, Microwave Hood Fan, Refrigerator, Washer, Window Coverings
Heating	Fan Coil
Cooling	Central Air, Full
# of Stories	34

## Exterior

Exterior Features	Other, Uncovered Courtyard
Construction	Brick, Concrete

## Additional Information

Date Listed	April 10th, 2025
Days on Market	82
Zoning	DC

## Listing Details

Listing Office	Coldwell Banker Home Smart Real Estate
----------------	--

Data is supplied by Pillar 9â„¢ MLS® System. Pillar 9â„¢ is the owner of the copyright in its MLS® System. Data is deemed reliable but is not guaranteed accurate by Pillar 9â„¢. The trademarks MLS®, Multiple Listing Service® and the associated logos are owned by The Canadian Real Estate Association (CREA) and identify the quality of services provided by real estate professionals who are members of CREA. Used under license.