

\$329,900 - 22 Valarosa Park, Didsbury

MLS® #A2218605

\$329,900

3 Bedroom, 2.00 Bathroom, 1,114 sqft

Residential on 0.03 Acres

NONE, Didsbury, Alberta

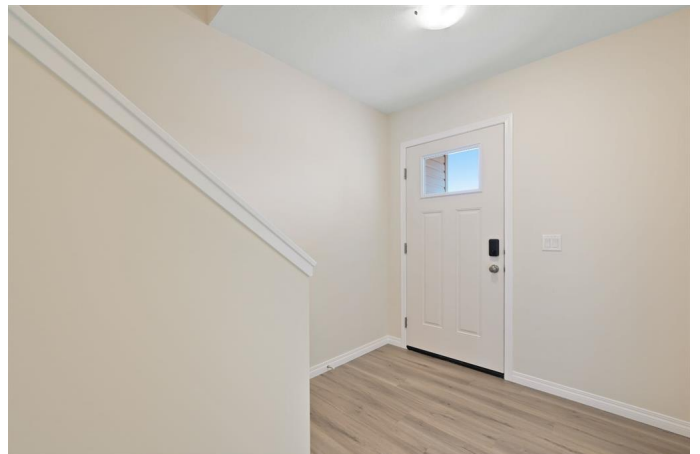
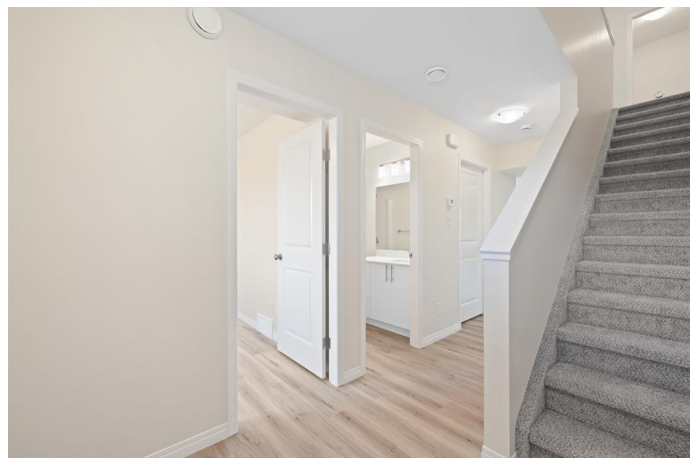
Welcome to this beautifully designed 3-bedroom, 2-bathroom townhouse in the desirable Valarosa community of Didsbury. This freehold unit offers the freedom of no condo fees or restrictions. The main floor features a spacious bedroom, a full bathroom, and an inviting great room, perfect for family gatherings, adjacent to a modern kitchen equipped with sleek stainless steel appliances, quartz countertops, and luxury vinyl plank flooring. Upstairs, you'll find two additional bedrooms, a second full bathroom, and a convenient laundry area. Both bathrooms feature quartz countertops and luxury vinyl plank flooring, adding a touch of elegance and durability throughout. Ample storage space is tucked beneath the stairs, ensuring everything has its place. Outside, enjoy serene views of a protected forest area that will never be developed, providing privacy and tranquility for years to come. The property also includes a concrete parking pad that comfortably accommodates two vehicles. Nearby, explore walking paths, a scenic pond, and a park, all within the friendly Valarosa neighborhood. This property is a perfect blend of nature, convenience, and modern living. Don't miss out on this exceptional opportunity!

Built in 2024

Essential Information

MLS® #

A2218605



Price	\$329,900
Bedrooms	3
Bathrooms	2.00
Full Baths	2
Square Footage	1,114
Acres	0.03
Year Built	2024
Type	Residential
Sub-Type	Row/Townhouse
Style	2 Storey
Status	Active

Community Information

Address	22 Valarosa Park
Subdivision	NONE
City	Didsbury
County	Mountain View County
Province	Alberta
Postal Code	T0M0W0

Amenities

Parking Spaces	2
Parking	Parking Pad

Interior

Interior Features	Quartz Counters, Recessed Lighting
Appliances	Dishwasher, Electric Stove, Microwave Hood Fan, Refrigerator, Washer/Dryer
Heating	Forced Air, Natural Gas
Cooling	None
Basement	None

Exterior

Exterior Features	Private Entrance, Private Yard
Lot Description	Environmental Reserve
Roof	Asphalt Shingle
Construction	Vinyl Siding
Foundation	Slab

Additional Information

Date Listed	May 6th, 2025
Days on Market	72
Zoning	R5

Listing Details

Listing Office	Real Broker
----------------	-------------

Data is supplied by Pillar 9â„¢ MLSÂ® System. Pillar 9â„¢ is the owner of the copyright in its MLSÂ® System. Data is deemed reliable but is not guaranteed accurate by Pillar 9â„¢. The trademarks MLSÂ®, Multiple Listing ServiceÂ® and the associated logos are owned by The Canadian Real Estate Association (CREA) and identify the quality of services provided by real estate professionals who are members of CREA. Used under license.