

\$2,500 - 65021 Highway 43, Grande Prairie

MLS® #A2219773

\$2,500

0 Bedroom, 0.00 Bathroom,
Commercial on 5.00 Acres

NONE, Grande Prairie, Alberta

A Unique leasing opportunity located in the Mountview Business Park consisting of 2,500 sq.ft. of professional second-floor office space with 7 + private offices, a meticulous boardroom, fob security entry, and two washrooms. The all-inclusive price of \$2,500.00 per month plus GST includes utilities, snow removal, lawn maintenance, property taxes, and building insurance. This ensures you won't have to worry about unexpected surprises when it comes to your monthly bills. Call your Commercial Realtor® today to book a showing.

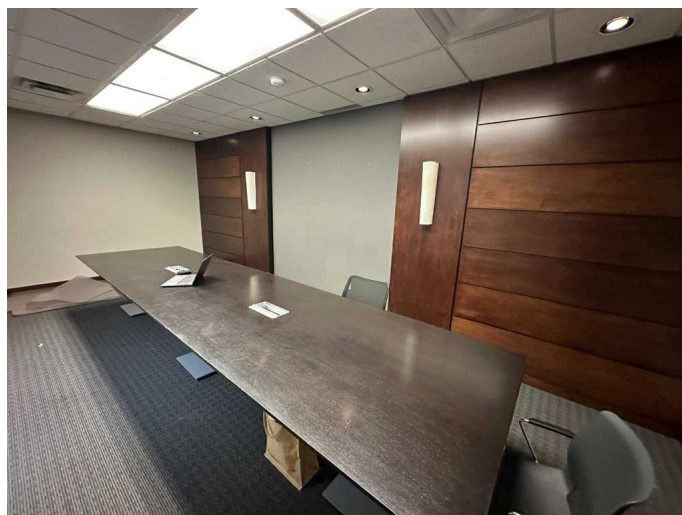
Built in 2007

Essential Information

MLS® #	A2219773
Price	\$2,500
Bathrooms	0.00
Acres	5.00
Year Built	2007
Type	Commercial
Sub-Type	Industrial
Status	Active

Community Information

Address	65021 Highway 43
Subdivision	NONE
City	Grande Prairie
County	Grande Prairie



Province	Alberta
Postal Code	T8W 5E7

Additional Information

Date Listed	May 9th, 2025
Days on Market	2
Zoning	General Industrial (IG)

Listing Details

Listing Office	RE/MAX Grande Prairie
----------------	-----------------------

Data is supplied by Pillar 9â„¢ MLS® System. Pillar 9â„¢ is the owner of the copyright in its MLS® System. Data is deemed reliable but is not guaranteed accurate by Pillar 9â„¢. The trademarks MLS®, Multiple Listing Service® and the associated logos are owned by The Canadian Real Estate Association (CREA) and identify the quality of services provided by real estate professionals who are members of CREA. Used under license.