

# \$599,900 - 2092 New Brighton Park Se, Calgary

MLS® #A2236839

**\$599,900**

4 Bedroom, 4.00 Bathroom, 1,386 sqft

Residential on 0.07 Acres

New Brighton, Calgary, Alberta

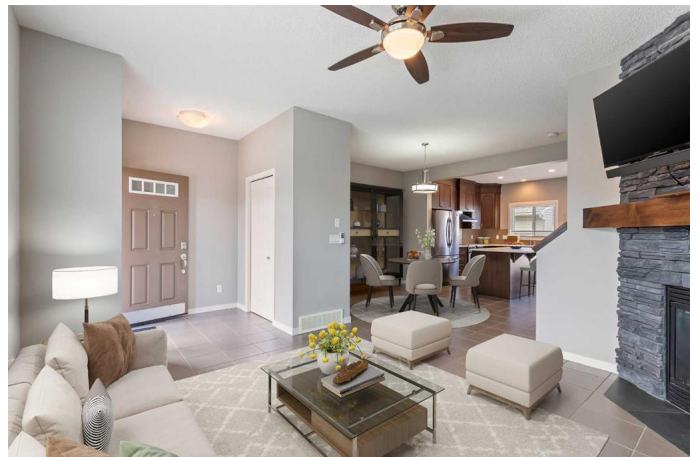
Tucked into a quiet pocket of New Brighton, this corner-lot home offers more privacy and fewer neighbors – without the hassle of extra sidewalk shoveling! Only local traffic passes through here, making it a peaceful spot that still feels connected. You're right in the heart of it all, surrounded by four scenic ponds, walking trails, and parks just steps away.

Built in 2012, this home is just 13 years old and has been well cared for – including a new roof replaced about five years ago, offering peace of mind for the next owner.

The curb appeal pulls you in right away and is beautifully landscaped. Once inside, you'll notice the ceramic tile floors – stylish, practical, and perfect for keeping cool in the summer. A cozy corner gas fireplace adds warmth to the living room, while the modern kitchen features rich dark cabinetry, a unique backsplash, and plenty of personality.

Patio doors lead to a fully fenced, low-maintenance backyard and provide access to the oversized double detached garage – plenty of space for vehicles, toys, or even a workshop setup.

Upstairs, you'll find three bedrooms, including a spacious primary suite with a walk-in closet and a 3-piece ensuite. The additional two bedrooms share another full 4-piece bathroom. The fully developed



basement adds even more living space, with a fourth bedroom, another full bathroom, a laundry room with a sink, and a second living area â€” perfect for growing families or guests.

This home is move-in ready with quick possession available and is close to everything: schools, parks, playgrounds (one just steps away), shopping, and easy access to both Stoney and Deerfoot Trail.

Whether you're upsizing or just looking for a great location with room to spread out, this home checks all the boxes.

Built in 2012

### **Essential Information**

MLS® #	A2236839
Price	\$599,900
Bedrooms	4
Bathrooms	4.00
Full Baths	3
Half Baths	1
Square Footage	1,386
Acres	0.07
Year Built	2012
Type	Residential
Sub-Type	Detached
Style	2 Storey
Status	Active

### **Community Information**

Address	2092 New Brighton Park Se
Subdivision	New Brighton
City	Calgary
County	Calgary
Province	Alberta
Postal Code	T2Z 1B3

### **Amenities**

Amenities	None
Parking Spaces	2
Parking	Double Garage Detached
# of Garages	2

### Interior

Interior Features	Built-in Features, Ceiling Fan(s), Kitchen Island, Open Floorplan, See Remarks
Appliances	Dishwasher, Dryer, Electric Stove, Microwave, Refrigerator, Washer, Window Coverings, Other
Heating	Forced Air, Natural Gas
Cooling	None
Fireplace	Yes
# of Fireplaces	1
Fireplaces	Gas
Has Basement	Yes
Basement	Finished, Full

### Exterior

Exterior Features	Private Yard
Lot Description	Back Lane, Corner Lot
Roof	Asphalt
Construction	Vinyl Siding, Wood Frame, Wood Siding
Foundation	Poured Concrete

### Additional Information

Date Listed	July 14th, 2025
Days on Market	5
Zoning	R-G
HOA Fees	362
HOA Fees Freq.	ANN

### Listing Details

Listing Office	eXp Realty
----------------	------------

Data is supplied by Pillar 9â„¢ MLS® System. Pillar 9â„¢ is the owner of the copyright in its MLS® System. Data is deemed reliable but is not guaranteed accurate by Pillar 9â„¢. The trademarks MLS®, Multiple Listing Service® and the associated logos are owned by The Canadian Real Estate Association (CREA) and identify the quality of services provided by real estate professionals who are members of CREA. Used under license.