

# \$609,000 - 12 Tarington Manor, Calgary

MLS® #A2249458

**\$609,000**

4 Bedroom, 2.00 Bathroom, 862 sqft

Residential on 0.07 Acres

Taradale, Calgary, Alberta

Welcome to this beautifully maintained bi-level residence offering the perfect blend of comfort, functionality, and convenience. Featuring 4 spacious bedrooms, this home is ideal for growing families, multi-generational living, or savvy investors looking to capitalize on its mortgage-helper potential.

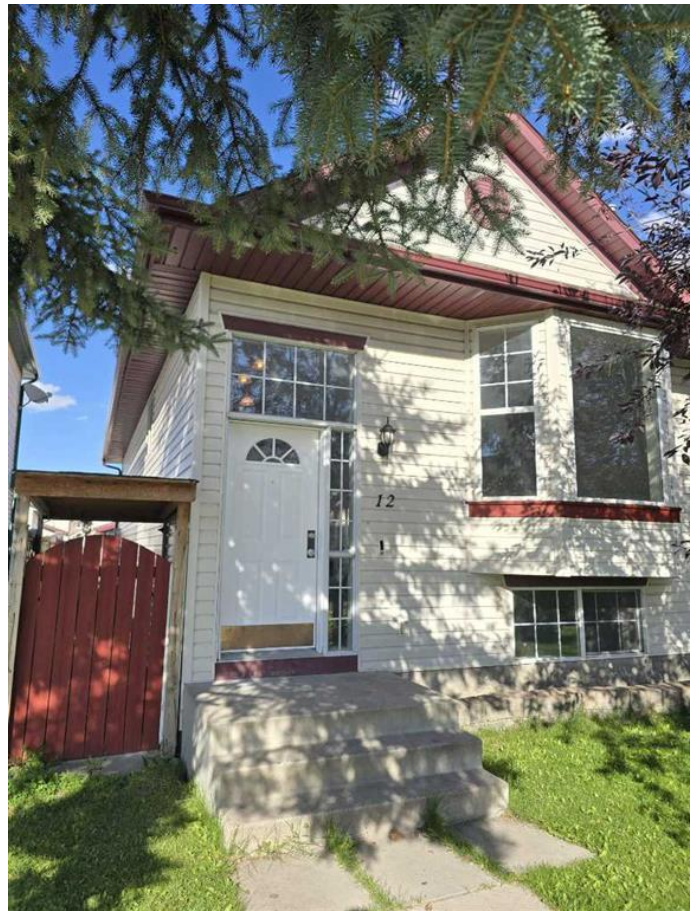
Built in 2002

## Essential Information

MLS® #	A2249458
Price	\$609,000
Bedrooms	4
Bathrooms	2.00
Full Baths	2
Square Footage	862
Acres	0.07
Year Built	2002
Type	Residential
Sub-Type	Detached
Style	Bi-Level
Status	Active

## Community Information

Address	12 Tarington Manor
Subdivision	Taradale
City	Calgary
County	Calgary
Province	Alberta



Postal Code T3J 4N2

### **Amenities**

Parking Spaces 4  
Parking Double Garage Detached, Off Street  
# of Garages 2

### **Interior**

Interior Features Kitchen Island, No Animal Home, No Smoking Home, Pantry, Storage, Walk-In Closet(s)  
Appliances Dishwasher, Electric Stove, Microwave, Refrigerator  
Heating Forced Air, Natural Gas  
Cooling Central Air  
Fireplace Yes  
# of Fireplaces 1  
Fireplaces Gas  
Has Basement Yes  
Basement Finished, Full

### **Exterior**

Exterior Features Balcony, Lighting, Private Yard  
Lot Description Back Lane, Back Yard, Front Yard, Low Maintenance Landscape, Street Lighting  
Roof Asphalt Shingle  
Construction Vinyl Siding, Wood Frame  
Foundation Poured Concrete

### **Additional Information**

Date Listed August 25th, 2025  
Days on Market 11  
Zoning R-G

### **Listing Details**

Listing Office Five Star Realty

Data is supplied by Pillar 9â„¢ MLSÂ® System. Pillar 9â„¢ is the owner of the copyright in its MLSÂ® System. Data is deemed reliable but is not guaranteed accurate by Pillar 9â„¢. The trademarks MLSÂ®, Multiple Listing ServiceÂ® and the associated logos are owned by The Canadian Real Estate Association (CREA) and identify the quality of services provided by real estate professionals who are members of CREA. Used under license.