

# \$25 - 105, 1330 15 Avenue Sw, Calgary

MLS® #A2254875

**\$25**

0 Bedroom, 0.00 Bathroom,  
Commercial on 0.00 Acres

Beltline, Calgary, Alberta

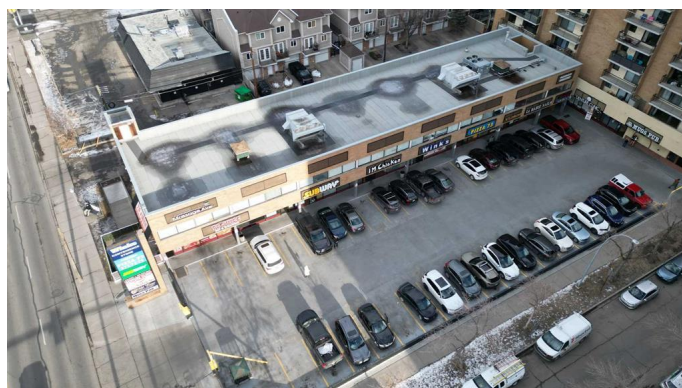
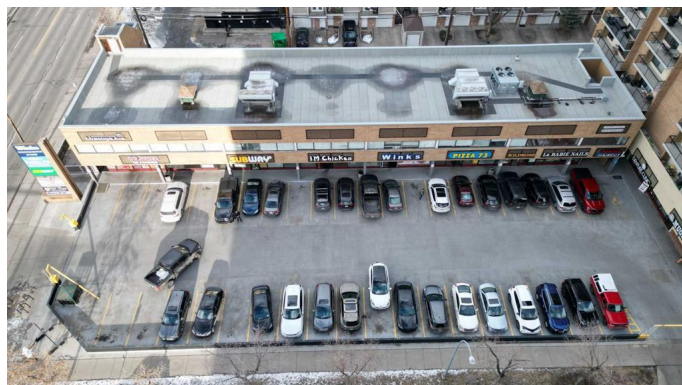
- Main floor retail unit 919 sq. ft. Available Oct 1, 2025 and 2nd floor Office suites, 1,267, 1,298 and 1,318 sq. ft.
- High exposure, high traffic, location with highly visible signage
- Vibrant high density corridor, great draw from surrounding multi family and retail
- Highly visible signage available
- Excellent front double row customer parking and street parking
- Below market Net Rental rates

High exposure office leasing opportunity with direct exposure to high traffic 14 Street SW. Wellington square is a mixed use residential high rise apartment building with main floor retail and 2nd floor office/flex units offered at below market rental rates. Creates a strong draw from existing main floor Tenants and built in traffic from residential component. Current Tenant™s Include; Calgary Denture Clinic, Asian Wok Express, IM Chicken, LaBabie Hair Studio, Massage Avenue, Mugs Pub, Pizza, 73, Pomme Barber, Rebel Haus Studio, Ruth Cafe & Restaurant, Subway, Wildrose Drycleaning, Winks, Kimbolino Brazilian Ju Jitsu

Built in 1973

## Essential Information

MLS® #                      A2254875



Price	\$25
Bathrooms	0.00
Acres	0.00
Year Built	1973
Type	Commercial
Sub-Type	Office
Status	Active

### **Community Information**

Address	105, 1330 15 Avenue Sw
Subdivision	Beltline
City	Calgary
County	Calgary
Province	Alberta
Postal Code	T3C 3N6

### **Exterior**

Construction	Concrete
--------------	----------

### **Additional Information**

Date Listed	September 8th, 2025
Days on Market	5

### **Listing Details**

Listing Office	Century 21 Bamber Realty LTD.
----------------	-------------------------------

Data is supplied by Pillar 9â,,ç MLSÂ® System. Pillar 9â,,ç is the owner of the copyright in its MLSÂ® System. Data is deemed reliable but is not guaranteed accurate by Pillar 9â,,ç. The trademarks MLSÂ®, Multiple Listing ServiceÂ® and the associated logos are owned by The Canadian Real Estate Association (CREA) and identify the quality of services provided by real estate professionals who are members of CREA. Used under license.