

# \$594,900 - 283 Waterford Heights, Chestermere

MLS® #A2257170

**\$594,900**

4 Bedroom, 3.00 Bathroom, 1,578 sqft  
Residential on 0.07 Acres

Waterford, Chestermere, Alberta

Welcome to 283 Waterford Heights in the beautiful community of Chestermere! This brand new, never-lived-in Windermere model by Douglas Homes offers 1,490 sq ft of thoughtfully designed living space with 4 bedrooms and 2.5 bathrooms—perfect for growing families or savvy investors.

Step inside to discover stylish 8-foot doors, elegant upgraded railings, and a main floor bedroom, ideal for guests or a home office. The modern kitchen boasts stainless steel appliances and a smart layout, seamlessly flowing into the open-concept living and dining areas. Upstairs, you'll find a luxurious dual vanity in the main bath and generous-sized bedrooms.

Additional highlights include a convenient side entrance, offering potential for future basement development or a secondary suite (subject to city approval). Located in a family-friendly neighborhood with parks, schools, and amenities nearby, this home combines comfort, functionality, and investment potential.

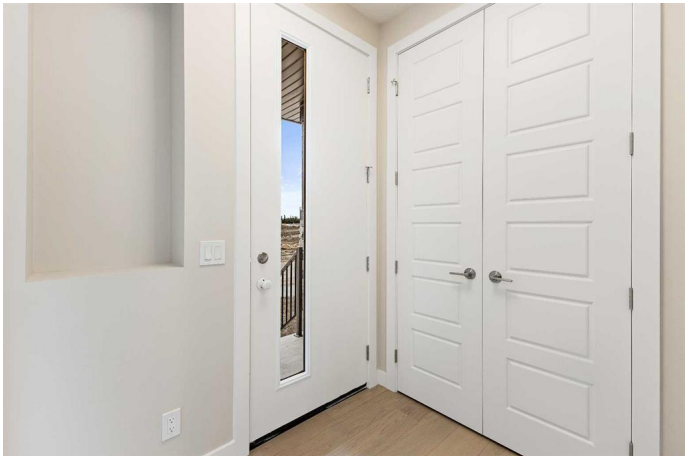
Don't miss your opportunity to own this stunning new build in Chestermere—book your showing today!



Unlock Your

First Home with the GST Rebate! The  
First-Time Home Buyers' GST Rebate could

save you up to \$50,000 on a new home! You must be 18+, a Canadian citizen or permanent resident, and haven't owned or lived in a home you or your spouse/common-law partner owned in the last four years. This is a LIMITED-TIME opportunityâ€”Homes placed under contract after May 27, 2025 are eligible, Terms and conditions are subject to the Government of Canada/CRA rules and guidelines. Note: Please be advised that the front elevation and interior photos shown are of the same model for illustration purposes only. The actual homeâ€™s style, interior colors, and finishes may vary. Call today!



Built in 2025

**Essential Information**

MLS® #	A2257170
Price	\$594,900
Bedrooms	4
Bathrooms	3.00
Full Baths	2
Half Baths	1
Square Footage	1,578
Acres	0.07
Year Built	2025
Type	Residential
Sub-Type	Detached
Style	2 Storey
Status	Active

**Community Information**

Address	283 Waterford Heights
Subdivision	Waterford
City	Chestermere
County	Chestermere
Province	Alberta
Postal Code	T1X3B6

## Amenities

Parking Spaces	2
Parking	Parking Pad

## Interior

Interior Features	Double Vanity, French Door, High Ceilings, Kitchen Island, Open Floorplan, Pantry, Quartz Counters, Separate Entrance
Appliances	Dishwasher, Electric Range, Microwave Hood Fan, Refrigerator
Heating	Forced Air
Cooling	None
Fireplace	Yes
# of Fireplaces	1
Fireplaces	Electric
Has Basement	Yes
Basement	Full, Unfinished

## Exterior

Exterior Features	None
Lot Description	Back Lane, Back Yard, City Lot, Rectangular Lot
Roof	Asphalt Shingle
Construction	Mixed
Foundation	Poured Concrete

## Additional Information

Date Listed	September 15th, 2025
Days on Market	1
Zoning	R-1PRL

## Listing Details

Listing Office	eXp Realty
----------------	------------

Data is supplied by Pillar 9â„¢ MLS® System. Pillar 9â„¢ is the owner of the copyright in its MLS® System. Data is deemed reliable but is not guaranteed accurate by Pillar 9â„¢. The trademarks MLS®, Multiple Listing Service® and the associated logos are owned by The Canadian Real Estate Association (CREA) and identify the quality of services provided by real estate professionals who are members of CREA. Used under license.