

\$398,000 - 147 Somervale Park Sw, Calgary

MLS® #A2262192

\$398,000

2 Bedroom, 1.00 Bathroom, 931 sqft

Residential on 0.04 Acres

Somerset, Calgary, Alberta

Welcome to Beautifully Maintained Somervale Park

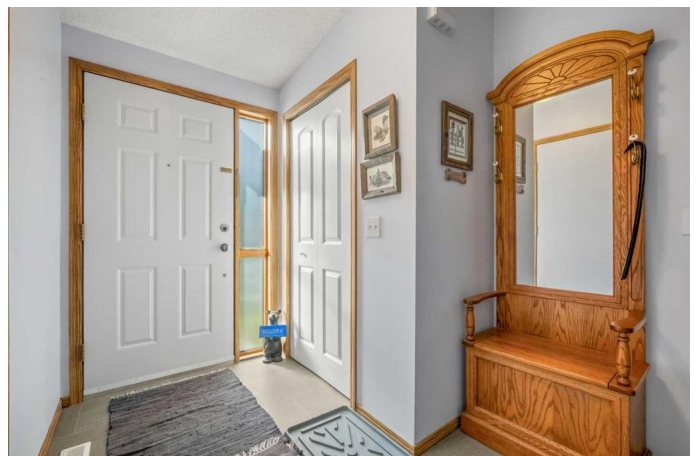
This immaculately kept complex features a serene setting with mature trees and a peaceful green space backing your unit. The complex had all-new roofs installed just two years ago, ensuring peace of mind for years to come.

Step inside this bright and neutral home offering just under 1,000 sq. ft. of stylish living space,.

with a cozy living room that features a charming gas fireplace and flows seamlessly to your private east-facing patio, offering tranquil views of the lush courtyardâ€”ideal for relaxing or outdoor dining.

There is a well appointed kitchen with ample counter space, new appliances, fresh paint, updated kitchen cabinets with new hardware, microwave hood fan. New Lino tile in the kitchen and updated lighting throughout.

Upstairs, the large primary bedroom includes a walk-in closet, and the upper level boasts new upgraded carpet with 10 lb. underlay. There is a second bedroom currently used as an office. The renovated 4 piece bath has new luxury Vinyl Plank, new toilet, sink and shower feature. All poly-b plumbing has been professionally removed, adding to the home's value and reliability. The lower level has the laundry with a water softener, folding table and storage.



Enjoy the convenience of a single attached garage, plus parking on your front driveway. Visitor parking is just steps away for your guests.

Located in a prime location just a short walk to:
Shawnessy Shopping Centre
LRT Station, Cardel Rec Centre / YMCA
Multiple schools and playgrounds
This home truly offers the best of convenience, comfort, and location.

Built in 1995

Essential Information

MLS® #	A2262192
Price	\$398,000
Bedrooms	2
Bathrooms	1.00
Full Baths	1
Square Footage	931
Acres	0.04
Year Built	1995
Type	Residential
Sub-Type	Row/Townhouse
Style	3 Level Split
Status	Active

Community Information

Address	147 Somervale Park Sw
Subdivision	Somerset
City	Calgary
County	Calgary
Province	Alberta
Postal Code	T2Y 3J4

Amenities

Amenities	None, Parking
Parking Spaces	2

Parking	Front Drive, Garage Door Opener, Single Garage Attached
# of Garages	1

Interior

Interior Features	Laminate Counters, No Smoking Home
Appliances	Dishwasher, Electric Range, Garage Control(s), Microwave Hood Fan, Water Softener, Window Coverings
Heating	Forced Air, Natural Gas
Cooling	None
Fireplace	Yes
# of Fireplaces	1
Fireplaces	Gas, Living Room, Mantle, Stone
Has Basement	Yes
Basement	Partially Finished, Partial

Exterior

Exterior Features	Courtyard, None
Lot Description	Cul-De-Sac, Landscaped, Gentle Sloping, Interior Lot
Roof	Asphalt Shingle
Construction	Brick, Vinyl Siding, Wood Frame
Foundation	Poured Concrete

Additional Information

Date Listed	October 3rd, 2025
Days on Market	8
Zoning	M-CG d44
HOA Fees	75
HOA Fees Freq.	ANN

Listing Details

Listing Office	Royal LePage Solutions
----------------	------------------------

Data is supplied by Pillar 9â„¢ MLS® System. Pillar 9â„¢ is the owner of the copyright in its MLS® System. Data is deemed reliable but is not guaranteed accurate by Pillar 9â„¢. The trademarks MLS®, Multiple Listing Service® and the associated logos are owned by The Canadian Real Estate Association (CREA) and identify the quality of services provided by real estate professionals who are members of CREA. Used under license.